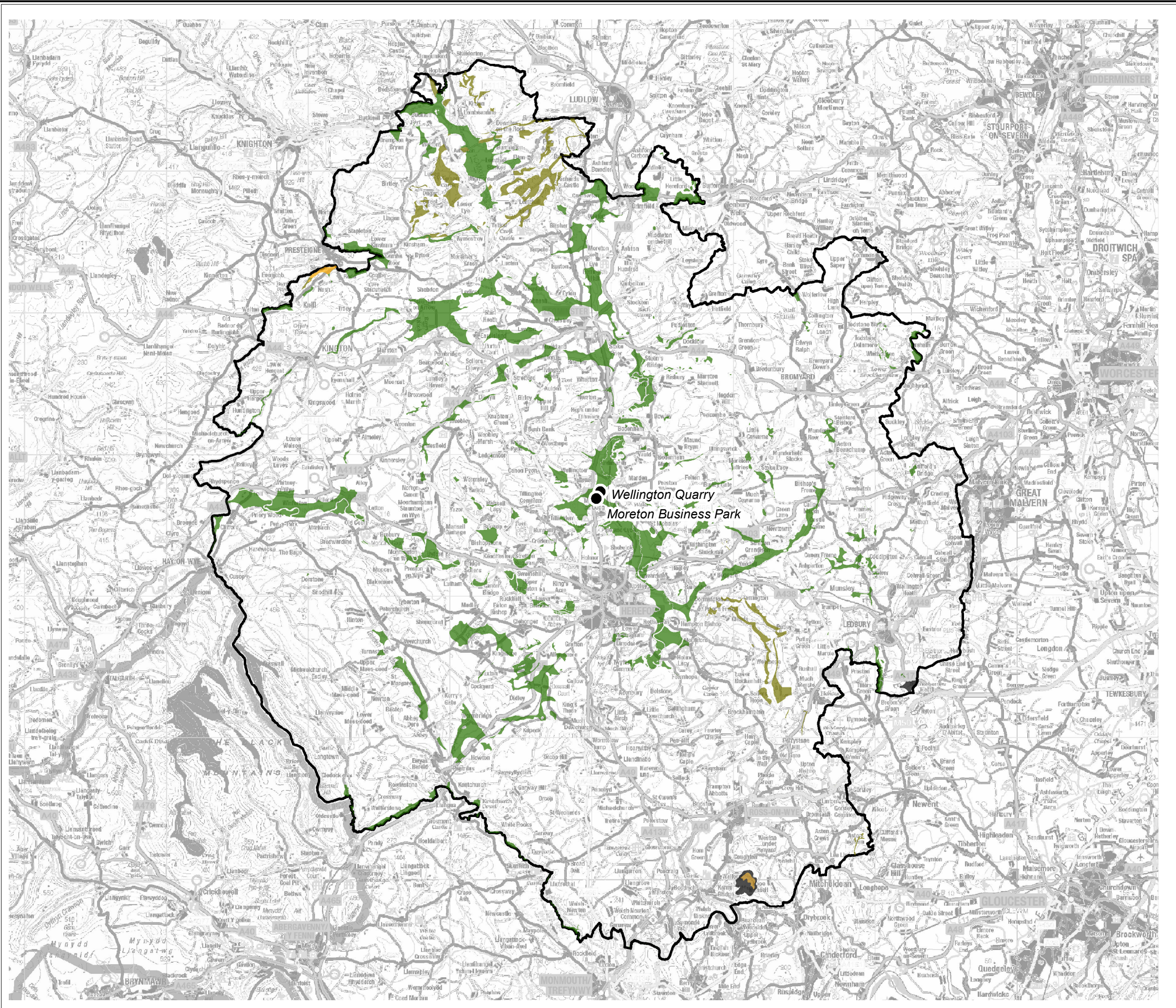


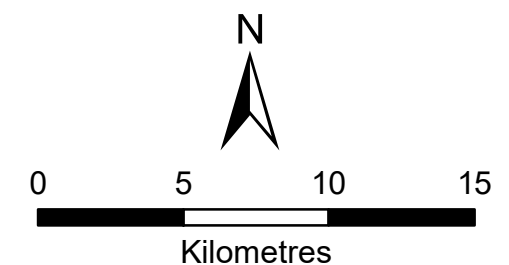
Herefordshire Minerals and Waste Local Plan

**Figure 7
Minerals Safeguarded Areas
including Rail Heads**



Mineral Reserves

- Brick clay
- Coal
- Limestone (including dolomite)
- Sandstone: Pre-Cambrian, Ordovician, Silurian Greywacke
- Superficial sand/gravel
- Rail Heads



SCALE: 1:260,000 @ A3
DATE: 23/03/2018